




With a Flourish! Our Teaching/Our Research/Our Well-being Panel

On Saturday, February 18, the IHDW sponsored a panel at the Provoking Curriculum Conference 2017, held at the Faculty of Education, McGill University.

This panel drew together academics at various points of their careers to share their stories in relation to mental health and well-being. Panelists reflected on what it means to flourish in the academy, with the hope that these stories can help to shape a curriculum of humanity in and beyond the university.

The panel included Claudia Eppert (U Alberta), Ingrid Johnston (U Alberta), Bronwen Low (McGill), Adrian McKerracher (Columbia), Nicholas Ng-A-Fook (U Ottawa), and Lisa Starr (McGill). 

“My own flourishing is dependent upon the flourishing of the whole.”

*Claudia Eppert,
University of Alberta*

“The most challenging aspect... is that our jobs are never done.”

*Ingrid Johnston,
University of Alberta*

“Having some kind of creativity will improve the way you view everything...”

Lisa Starr, McGill

“A space for meaningful relationships, a commitment to high-quality work, a sense of impact and positive change, and a growing community of support.”

Adrian McKerracher, Columbia



The IHDW has a new node: Education for Mental Health and Well-being

International Dialogue Workshop (IHDW) has a new node: Education for Mental Health and Well-being. The new node will focus on the role of education in promoting mental health and well-being, and will be led by experts in the field.

International Dialogue Symposium 'From the Ground Up' Policy Making Led by Girls and Young Women in Addressing Sexual Violence



Check the launch of the video

Photo: Hani Sadati

The International Dialogue Symposium 'From the Ground Up' Policy Making Led by Girls and Young Women in Addressing Sexual Violence was held in London, UK, on 4-5 October 2016. The symposium was organized by the International Dialogue Workshop (IHDW) and the Centre for Women's Studies (CWS) at the University of London. The symposium was a landmark event, as it was the first time that girls and young women led the policy-making process.



Photo: Hani Sadati

The symposium was a landmark event, as it was the first time that girls and young women led the policy-making process. The symposium was organized by the International Dialogue Workshop (IHDW) and the Centre for Women's Studies (CWS) at the University of London. The symposium was a landmark event, as it was the first time that girls and young women led the policy-making process.

Margaret Kovach, "Indigenous Pathways in Education"

Margaret Kovach, "Indigenous Pathways in Education". Margaret Kovach is a leading expert in the field of indigenous education. She has written extensively on the topic and has been instrumental in the development of indigenous education policies in many countries. Her work has been widely cited and has inspired many educators and researchers.

Watch for!

Second Season of the Weekly Indigenous Film Series

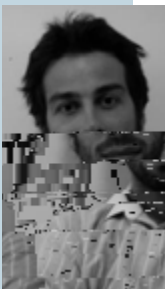
The International Dialogue Workshop (IHDW) is proud to announce the launch of the second season of the Weekly Indigenous Film Series. The series features a collection of films that explore the experiences of indigenous peoples and their struggles for recognition and justice. The films are available for free viewing on the IHDW website.

Partnership with the P. Lantz Initiative for Excellence in Education & the Arts



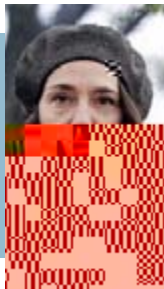
IHD
P. Lantz Initiative for Excellence in Education & the Arts
Faculty of Education, McGill University
The P. Lantz Initiative for Excellence in Education & the Arts
McGill University
The P. Lantz Initiative for Excellence in Education & the Arts
Faculty of Education, McGill University
The P. Lantz Initiative for Excellence in Education & the Arts
Faculty of Education, McGill University
The P. Lantz Initiative for Excellence in Education & the Arts
Faculty of Education, McGill University

Photo: Hani Sa



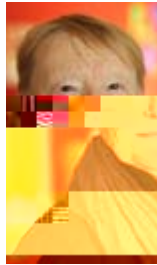
New Artists-in-Residence working at the Faculty of Education

Artists-in-Residence working at the Faculty of Education
The P. Lantz Initiative for Excellence in Education & the Arts
Faculty of Education, McGill University
The P. Lantz Initiative for Excellence in Education & the Arts
Faculty of Education, McGill University
The P. Lantz Initiative for Excellence in Education & the Arts
Faculty of Education, McGill University
The P. Lantz Initiative for Excellence in Education & the Arts
Faculty of Education, McGill University
The P. Lantz Initiative for Excellence in Education & the Arts
Faculty of Education, McGill University
The P. Lantz Initiative for Excellence in Education & the Arts
Faculty of Education, McGill University



Cafe Collab: Mediation Through Participatory Media-Making!

C C " " r t r n
t n t n Participa or C l res Lab, t t
t n t n IHD t M G " F t
E t n; n M G " 3 i E t n
D r t E t n O . At r t n r t
r n t n, Caf C llab n i t l m n t
t n t n 33M B i n . t n t t ,
t n t n t n t n n , C
C " t t n t n t r t m
t n r n m l n n r t n
t n t m r l n r n n t n



Dr. Jacob Burack

Find us:

3724 Avenue McGill, Room 303

www.mcgill.ca/ihdw

IHDW Contact

Director:

Claudia Mitchell
claudia.mitchell@mcgill.ca

Coordinator:

Maria Ezcurra
maria.ezcurralucotti@mcgill.ca

The Institute's work addresses the role that leadership and policy-making can play in human development and well-being. It intends to promote a comprehensive understanding of human development and well-being through collaboration among scholars from a variety of disciplines and community leaders, and to foster understanding of issues affecting human development, and identify intersecting barriers to the well-being of individuals and communities.

The IHDW is directed by Claudia Mitchell, James McGill Professor in the Department of Integrated Studies in Education. The Institute currently has five 5 Co-Directors (Neil Andersson, Jake Burack, Jeffrey Derevensky, Shaheen Shariff and Ingrid Sladeczek) and involves Associate Members from McGill and Community Partners from other parts of Canada and internationally.

