



*“129. The board of directors of each institution referred to in sections 119 to 126 is composed of the following persons, who become members of the board as and when they are elected, designated, appointed or co opted...”*

**No distinction for affiliates; maximum 15 board members; reduced from 4 to 1 for universities**





*(Maya Saleh, et al)*



*(Complex Traits)*



*Dr. John Hanrahan)*

*(Dr. David Thomas,*







- RI MUHC & Lady Davis, Jewish General Hospital:



- Lady Davis, Jewish General Hospital  
*C. difficile,*

- MUHC:



McGill

Faculty of

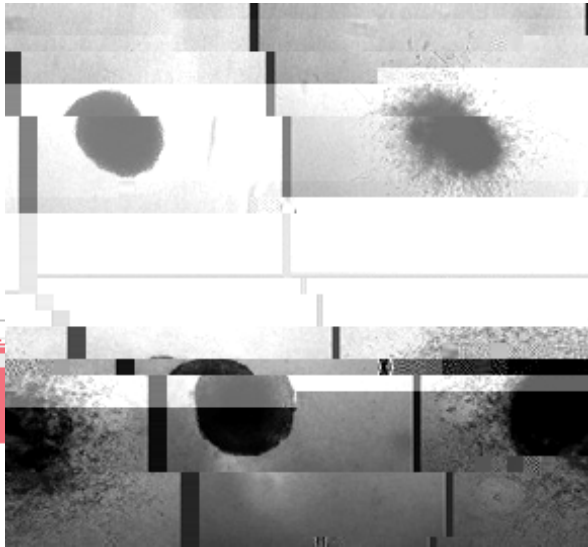
- St. Mary's

:



- Montreal Neurological Institute and Hospital

- Douglas Mental Health University Institute



McGill

Faculty of

Discovery Next Steps...

Discovery

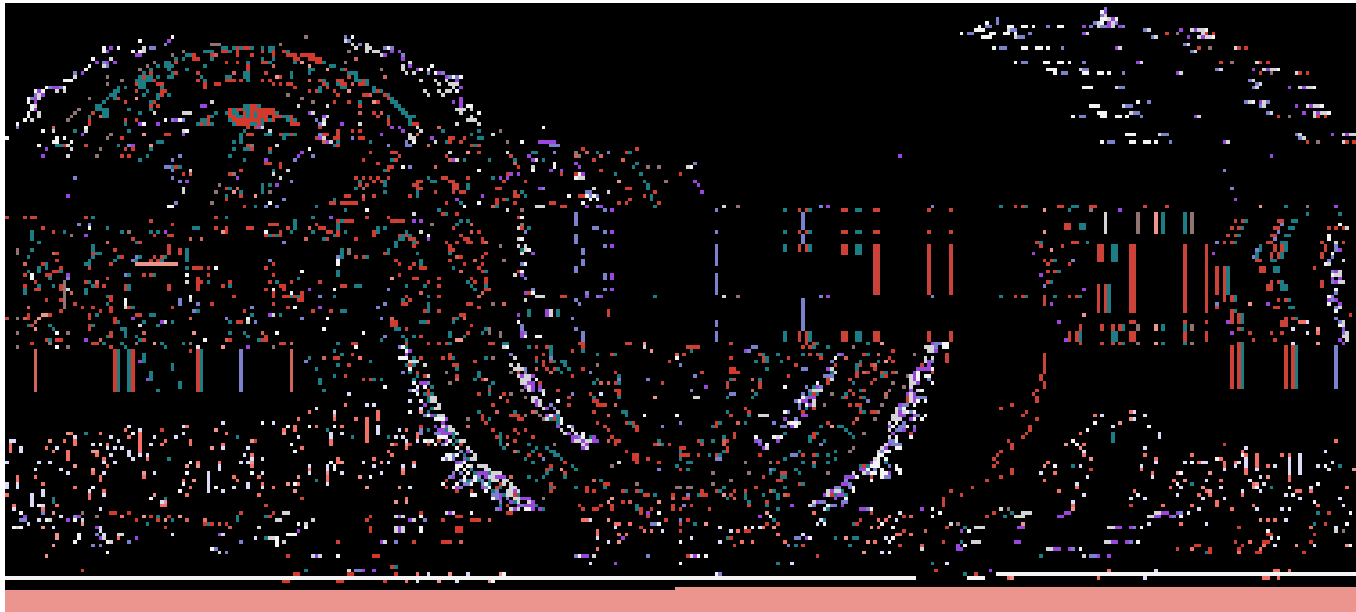
***John C.S. Breitner: Pfizer Canada Professorship  
in Prevention of Dementia, Alzheimer's Disease***



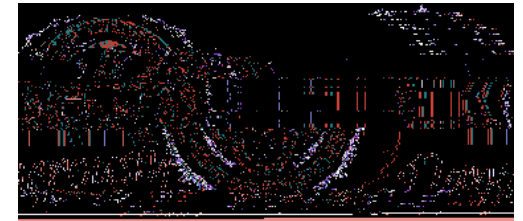
# Special Presentation...











•

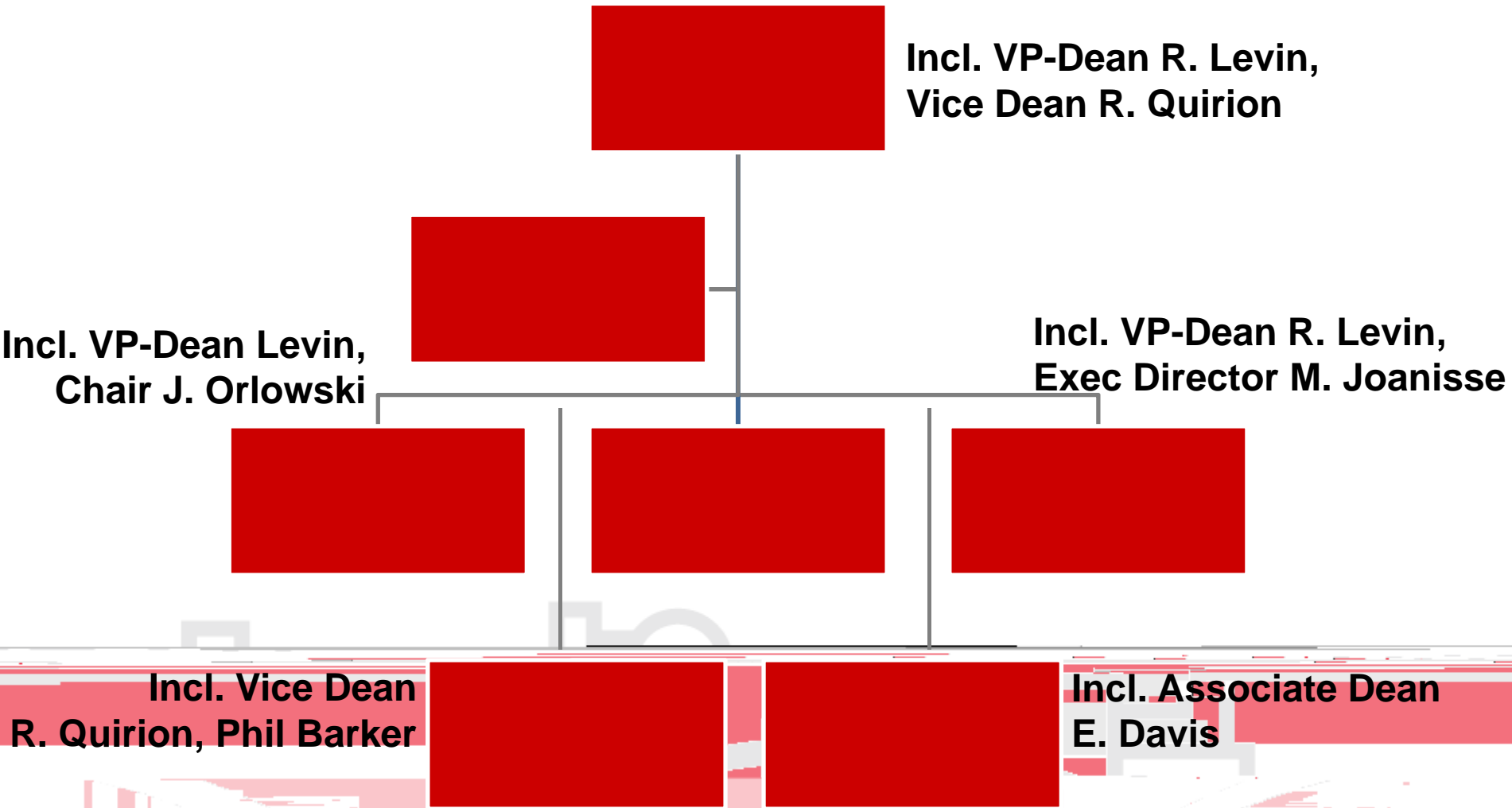
•

•











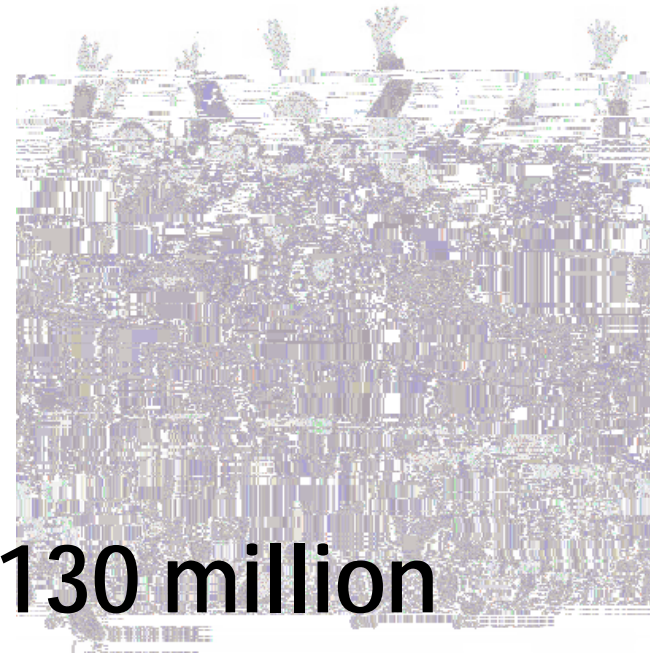
---

# TOTAL REDUCTION FOR FACULTY









**\$130 million**

*(and*



**McGill**

Faculty of



